

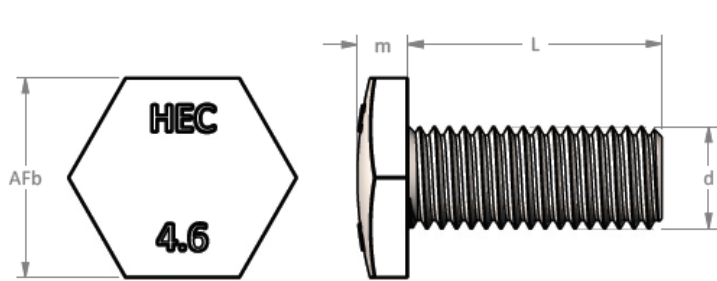
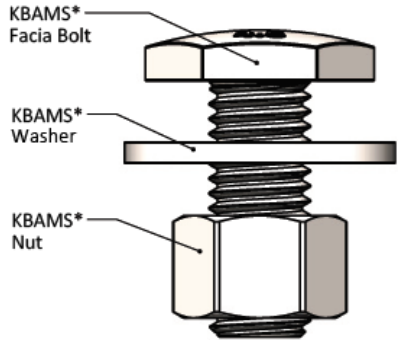
# ASSEMBLY BOLTS

A Hobson 4.6 Fascia Bolt assembly consists of a property class 4.6 bolt, a washer and a class 5 nut. They come in two types of coating, zinc plated (ZP) and hot dip galvanised (HDG).

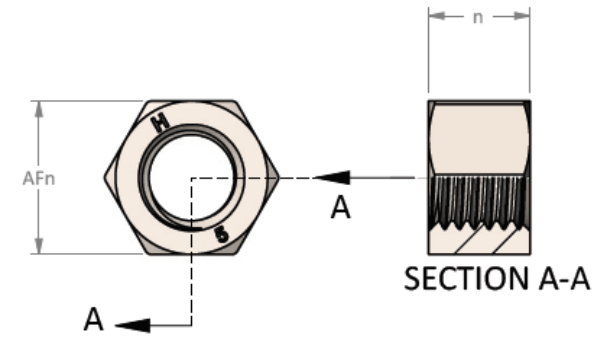
In the absence of tightening torque information from specifying engineers or fascia suppliers, the indicative tightening torque shown below can be used as a guide to establish the suitable tightening torque.



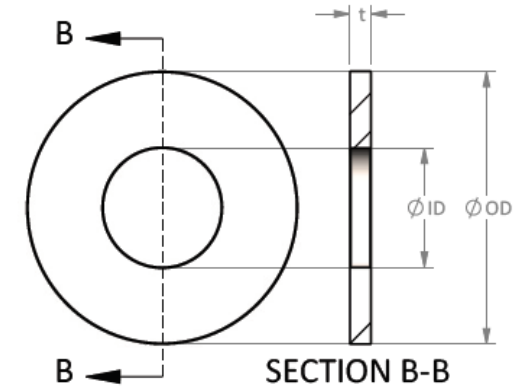
*For further technical information please contact Southeast Fasteners direct*



KBAMS\* Bolt



KBAMS\* Nut



KBAMS\* Washer

Southeast Fastener	ABN 30117890114		
Larapinta Branch:	71 Axis Place, LARAPINTA QLD 4110	TEL: 07 3273 4400	FAX: 07 3272 4999
Eagle Farm Branch:	109A Links Avenue South, EAGLE FARM QLD 4009	TEL: 07 3268 77 88	FAX: 07 3268 5689

# ASSEMBLY BOLTS



			Bolt			Nut		Washer				
											Indicative	

## Installation Reminder:

Skewed bolt assembly orientation should be avoided. The base of the head and the base of the nut should be in full contact with the fastened component(s) as shown on Fig. 1.

Hole size and dimensions should be in accordance with AS4600 or as specified by the designing engineer.

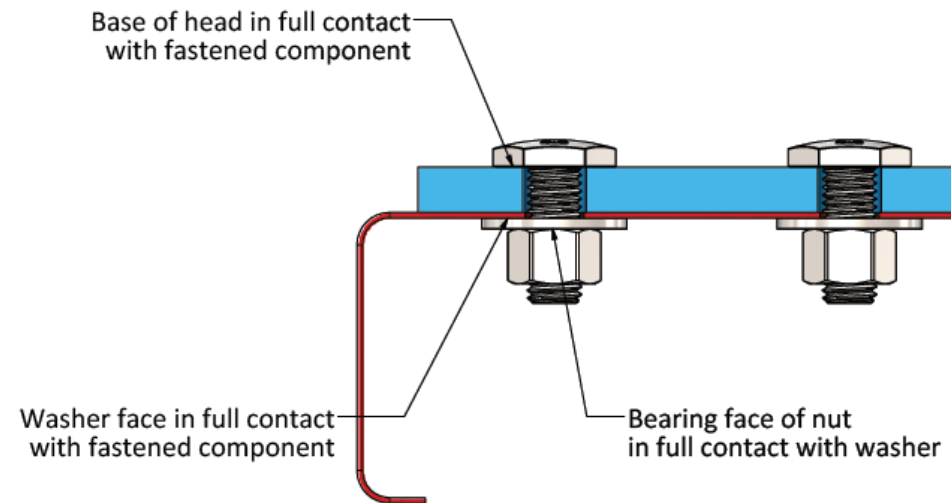


Fig. 1

thread conditions, thread/bearing surfaces lubrication and site conditions. All relevant bearing surfaces are assumed to be in full contact as shown in Fig. 1. The required bolt tension and torque should be validated/defined by the deciding engineer.

<sup>2</sup> Bolt tension is calculated at 50% percent of the bolt's proof load.

Southeast Fastener	ABN 30117890114		
Larapinta Branch:	71 Axis Place, LARAPINTA QLD 4110	TEL: 07 3273 4400	FAX: 07 3272 4999
Eagle Farm Branch:	109A Links Avenue South, EAGLE FARM QLD 4009	TEL: 07 3268 77 88	FAX: 07 3268 5689

# ASSEMBLY BOLTS

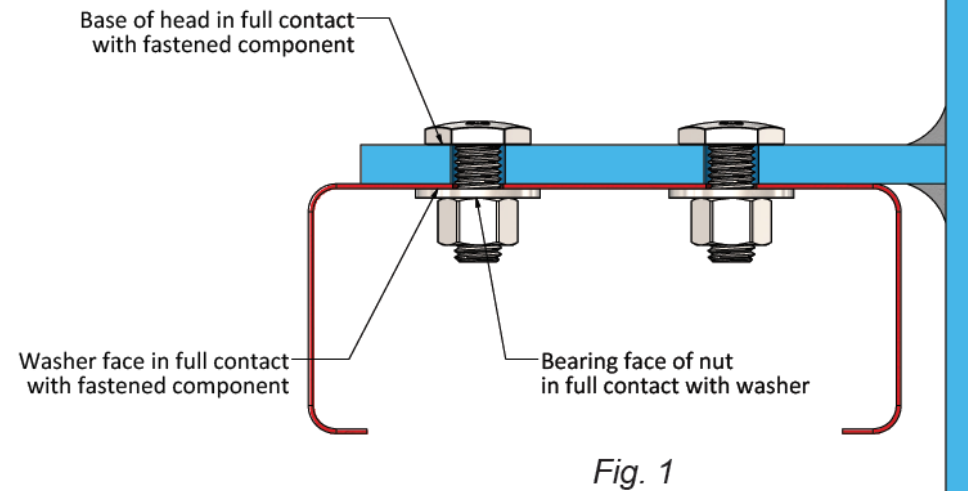


*For further technical  
Information please contact  
Southeast Fasteners direct*

## Installation Reminder:

Skewed bolt assembly orientation should be avoided. The base of the head and the base of the nut should be in full contact with the fastened component(s) as shown on Fig. 1.

Hole size and dimensions should be in accordance with AS4600 or as specified by the designing engineer.



Southeast Fastener	ABN 30117890114		
Larapinta Branch:	71 Axis Place, LARAPINTA QLD 4110	TEL: 07 3273 4400	FAX: 07 3272 4999
Eagle Farm Branch:	109A Links Avenue South, EAGLE FARM QLD 4009	TEL: 07 3268 77 88	FAX: 07 3268 5689