

# PURLIN ASSEMBLY CLASS 8 NUTS

Hot Dip Galvanise  
Zinc Yellow Passivate  
Plain



## PURLIN HEX BOLT, NUT & 2 WASHER KIT CLASS 8.8 / CLASS 8 HOBSON STANDARD (ASSEMBLED)

Part	Size	Length (mm)	Pack	Pack Wgt (Kg)	Pallet	Stock Z/P
KBHHTZCM160030	M16	30	100	14.10	4,800	✓
KBHHTZCM160040	M16	40	100	15.80	4,800	✓

*For further technical  
Information please contact  
Southeast Fasteners direct*



## METRIC HEX LOCK NUT CLASS 8 AS1112.4

Part	Size	Pack	Pack Wgt (Kg)	Stock HDG
NL08GCM12	M12	100	0.93	✓
NL08GCM16	M16	100	2.14	✓

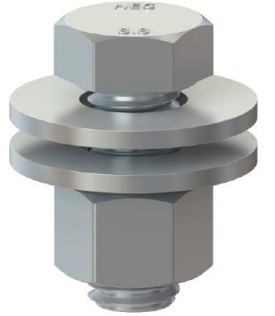
? = G: Hot Dip Galvanise (HDG)    Z: Zinc Plate (Z/P)    Y: Zinc Yellow Passivate (ZYP)    P: Plain (PLN)



Southeast Fasteners QLD  
109A Links Avenue South  
EAGLE FARM QLD 4109

Phone: 07 3268 7788  
sales@sefql.com.au

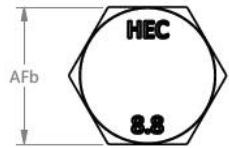
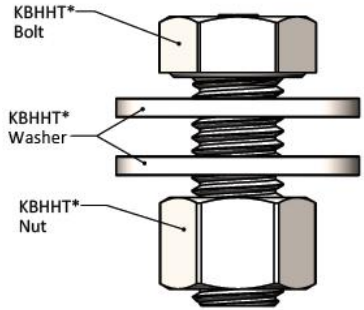
# HOBSON 8.8 FLANGE PURLIN 2 WASHER BOLT ASSEMBLIES



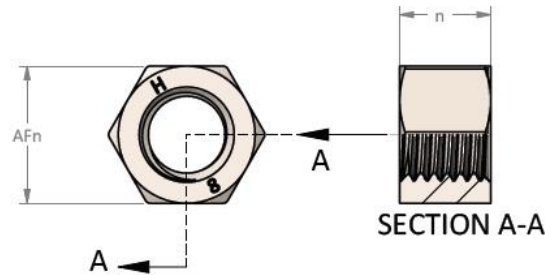
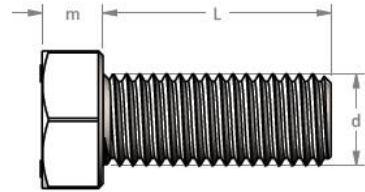
*For further technical  
Information please contact  
Southeast Fasteners direct*

A Hobson 8.8 Flange Purlin Bolt assembly consists of a property class 8.8 flange bolt and a class 8 flange nut. They come in two types of coating, zinc plated (ZP) and hot dip galvanised (HDG).

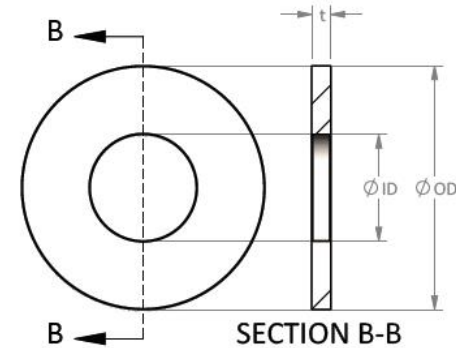
In the absence of tightening torque information from specifying engineers or purlin suppliers, the indicative tightening torque shown below can be used as a guide to establish the suitable tightening torque.



KBHHT\* Bolt



KBHHT\* Nut



KBHHT\* Washer



Southeast Fasteners QLD  
109A Links Avenue South  
EAGLE FARM QLD 4109

Phone: 07 3268 7788  
sales@sefql.com.au

# HOBSON 8.8 FLANGE PURLIN 2 WASHER BOLT ASSEMBLIES



*For further technical  
Information please contact  
Southeast Fasteners direct*

Part Number	Finish	Thread Size	Bolt			Nut		Washer			Indicative Tightening Torque <sup>1</sup>	Resulting Bolt Tension <sup>2</sup>
			Across Flats	Head Height	Bolt Length	Across Flats on Nut	Nut height	Outside Diameter	Inside Diameter	Washer Thickness		
			AF <sub>b</sub> (mm)	m (mm)	L (mm)	AF <sub>n</sub> (mm)	n (mm)	OD (mm)	ID (mm)	t (mm)		
KBHHTGCM120030	HDG	M12	18	7.5	30	18	12	32	14	2.0	73.0	24,450
KBHHTZCM120030	ZP	M12	18	7.5	30	18	12	32	14	2.0	64.0	24,450
KBHHTZCM160030	ZP	M16	24	10.0	30	24	16	34	18	2.5	160.0	45,500
KBHHTZCM160040	ZP	M16	24	10.0	40	24	16	34	18	2.5	160.0	45,500
KBHHTZCM160045	ZP	M16	24	10.0	45	24	16	34	18	2.5	160.0	45,500

## Important Notes:

<sup>1</sup> Tightening torque  $T$  is calculated by using the basic formula,  $T = P \cdot k \cdot D$ , where  $P$  is the intended bolt tension assumed to be 50% percent of the bolt's proof load,  $k$  is the torque-friction factor and  $D$  is the thread diameter. The  $k$  value used for zinc plated and hot dip galvanised assemblies are 0.22 and 0.25 respectively. Note that the value of  $k$  can vary depending on thread conditions, thread/bearing surfaces lubrication and site conditions. All relevant bearing surfaces are assumed to be in full contact as shown in Fig. 1. The required bolt tension and torque should be validated/defined by the deciding engineer.

<sup>2</sup> Bolt tension is calculated at 50% percent of the bolt's proof load.



Southeast Fasteners QLD  
109A Links Avenue South  
EAGLE FARM QLD 4109

Phone: 07 3268 7788  
sales@sefql.com.au

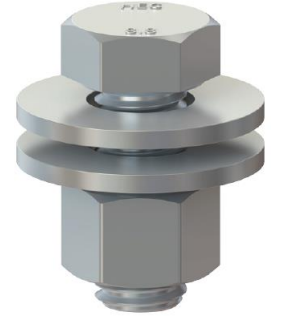
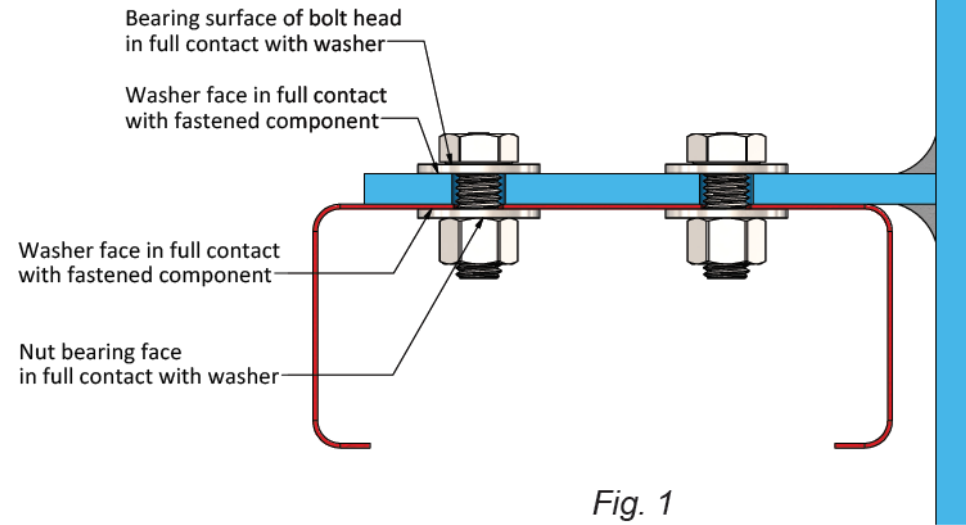
# HOBSON 8.8 FLANGE PURLIN 2 WASHER BOLT ASSEMBLIES



## Installation Reminder:

Skewed bolt assembly orientation should be avoided. The base of the head and the base of the nut should be in full contact with the fastened component(s) as shown on Fig. 1.

Hole size and dimensions should be in accordance with AS4600 or as specified by the designing engineer.



*For further technical information please contact Southeast Fasteners direct*



Southeast Fasteners QLD  
109A Links Avenue South  
EAGLE FARM QLD 4109

Phone: 07 3268 7788  
sales@sefqlld.com.au